

A2X price data on Bloomberg

Bloomberg provides real-time data coverage of securities listed on A2X.

Full visibility of price and volume activity will empower you to achieve best execution when transacting in listed securities across A2X and the JSE.

How do you find A2X price data on Bloomberg?

The data can be located using the A2X exchange code **AJ**. Users can access the data by typing in the security code followed by the exchange identifier and asset class.

For instance, the price of Afrimat shares can be accessed using **AFT AJ Equity <GO>**.

The list of shares currently available for trade can be found on our website www.a2x.co.za

A Bloomberg subscription is required to access real-time data. Without it, you'll only be able to view data with a 15-minute delay.

Subscription process EXC <GO>

To subscribe, follow the below process:

- Type the identifier in the command line **AFT AJ Equity <GO>**
- Run **DES <GO>** for the description of the stock to ensure that you are capturing the correct security
- Ensure you use the A2X exchange code **AJ**



- On the same panel type in **EXC <GO>** and the user will be taken to this subscription screen
- Tick the **Add** box to subscribe for real time data and then hit the button on the top left-hand corner **1) Request Access**
- The cost to subscribe to real-time market data is indicated under the **Monthly Fee**



Please note, you will need to logout and re-login for the enablements to take effect

BDME (Bloomberg Data Model Encyclopedia)

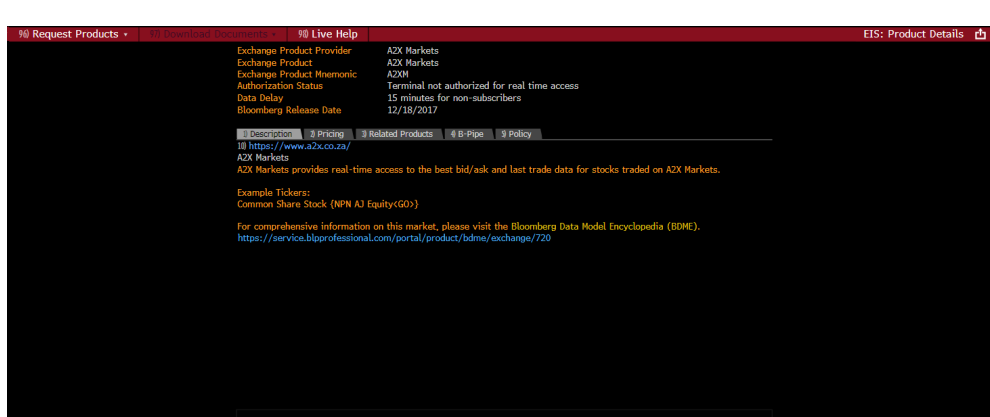
Bloomberg have a client facing portal which has the Bloomberg Data Model Encyclopedia where you can find a catalogue of all supported exchanges and the datasets Bloomberg supports on those exchanges.

- A2X on BDME: <https://service.blpprofessional.com/portal/product/bdme/exchange/720/info>

EIS (Exchange Information System)

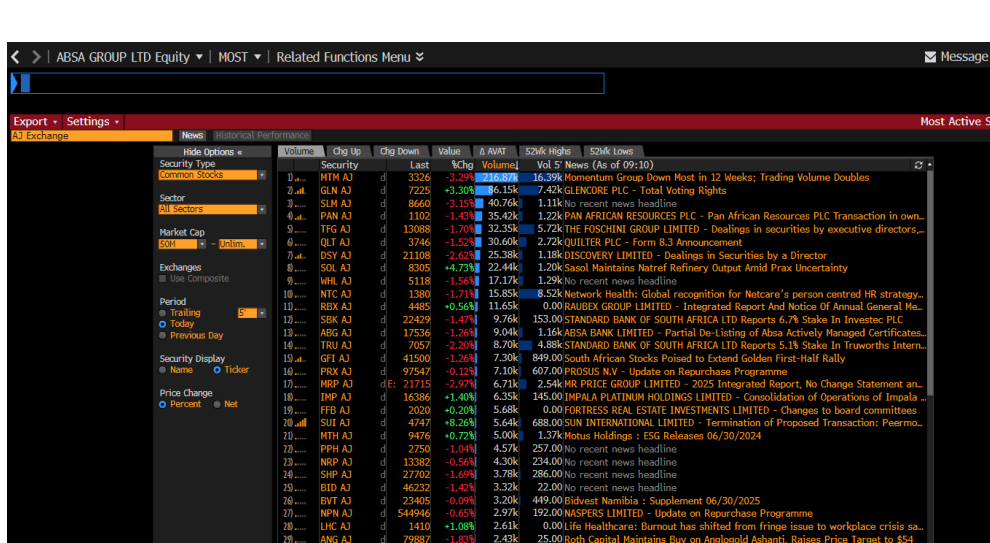
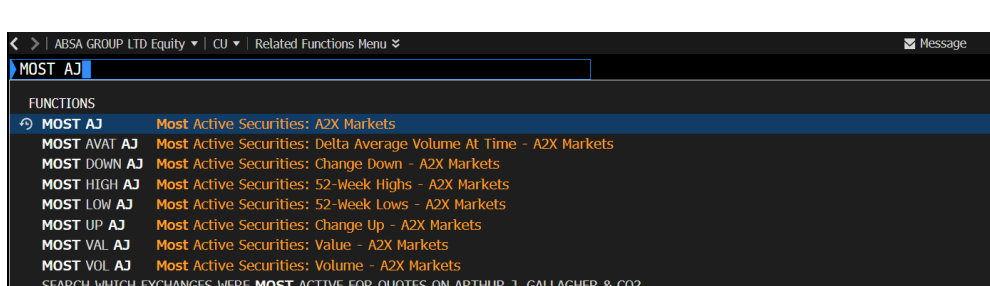
For subscribing to an exchange product, Bloomberg recommends clients to use **EIS <GO>**, which allows you to see a list of real-time exchange products for which you are currently authorized and request access to specific exchange products [Search Products tab].

- EIS allows you to chat live with representatives about exchange products via the Live Help option under [Request Products tab], download pricing details [Options tab], and see exchange notifications [Options tab].



MOST Function

Bloomberg also have the **MOST** function to discover most actively traded instruments on an exchange so **MOST AJ <GO>** will return A2X most traded instruments.



Contact the Bloomberg helpdesk by hitting Help Help (F1 F1) on your Bloomberg keyboard for assistance.