



> A2X price data through Refinitiv

Refinitiv provides real-time data coverage of securities listed on A2X.

Full visibility of price activity will empower you to achieve best execution when transacting in listed securities across A2X and the JSE.

How do you find A2X price data through Refinitiv?

First, subscribe to Refinitiv Eikon to access A2X real-time information. Apart from the Eikon subscription, there are NO additional fees to access this real-time data from A2X through Refinitiv.

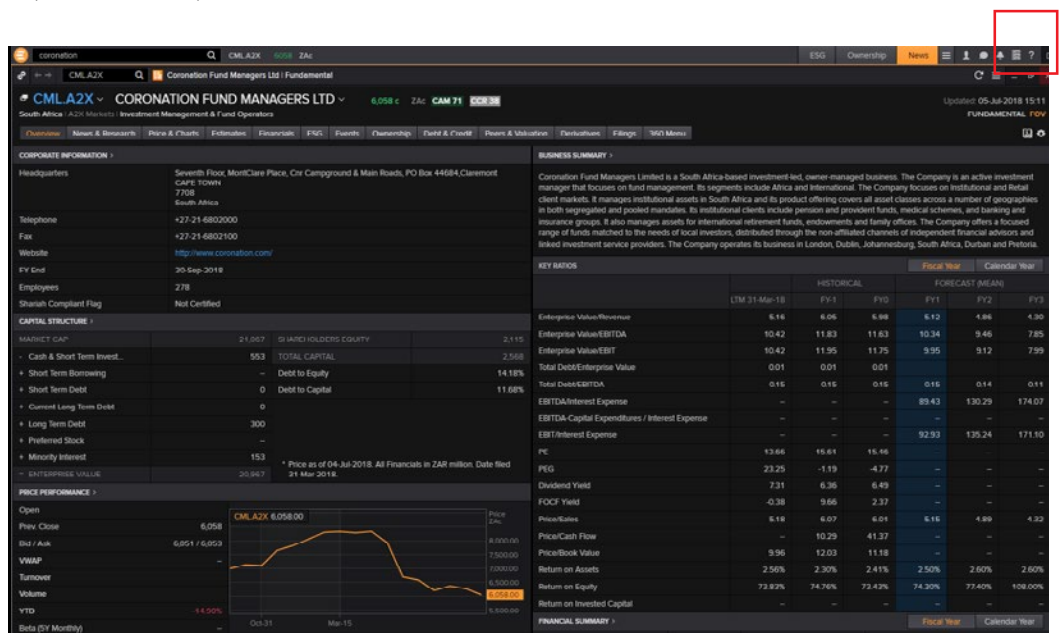
How do you find A2X price data on Refinitiv Eikon?

The data can be located using the A2X exchange code "A2X". Users can access the data by typing in the Security Code and the Exchange Code "A2X" in the search box, for example "CML A2X".

The list of shares currently available for trade can be found on www.a2x.co.za

To access the data, follow the below process:

- » Type the identifier in the Search Bar, for instance "CML A2X"
- » Coronation Fund Managers listed on A2X will come up in the autosuggest bar
- » Ensure to select "CML.A2X" to view Coronation Fund Managers' listing on A2X in the new window that will open once selected (and not CMLJ.J)

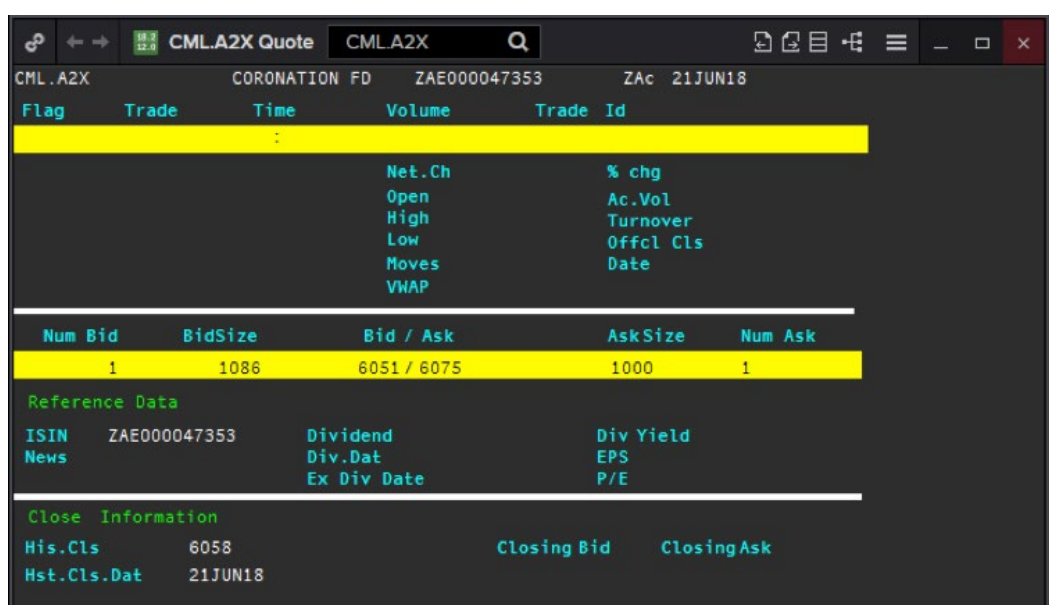
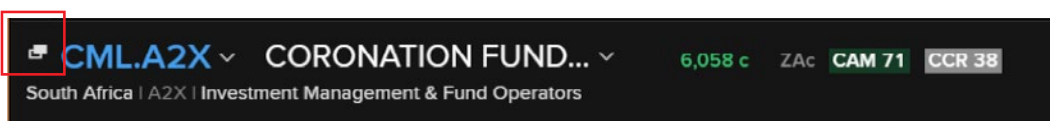


Contact the Refinitiv helpdesk by for further assistance, by clicking on the Question Mark on the right of your Eikon Toolbar.

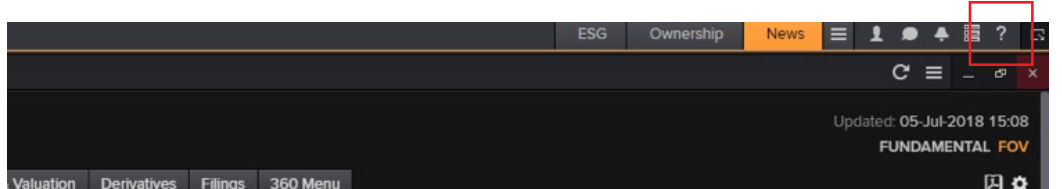
Accessing the Real-time Level 1 data on Chain RIC [O#ALLSHARES.A2X]

Refinitiv provides real-time price coverage of all securities listed on A2X under the Chain RIC (Reuters Instrument Code) [O#ALLSHARES.A2X] on Refinitiv Eikon.

Clicking this Pop-Out Window on the left-hand side of the Company Overview Page, will take you to the below Level 1 real-time RIC.



Contact the Refinitiv Help Desk for further assistance, by clicking on the Question Mark on the right of your Eikon Toolbar.



A2X Data is also available from Refinitiv through a feed.



www.a2x.co.za @A2X_Markets

A2X Markets is an exchange licensed in terms of the Financial Market Act, 2012

