



How to find listed instruments in IRESS

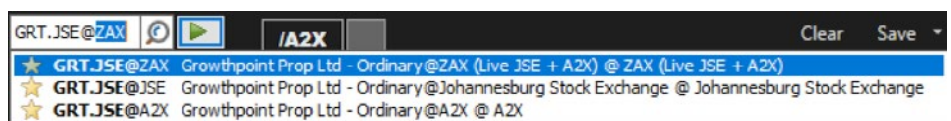
IRESS provides real-time data coverage of securities listed on A2X. IRESS Professional (IRESS Pro) has predefined trading focussed commands, designed to enable users to view best execution locations as well as trade analysis.

How to find A2X listed instruments through IRESS?

Access A2X data through multiple ways including through the search function or through the predefined A2X watchlist.

To access the data through searching, follow the process detailed below:

- » Type the identifier in the search bar using the following instrument structure: **code.primary exchange@datasource**
i.e. GRT.JSE@A2X
- » Select **GRT.JSE@A2X** in the drop down menu.
- » This will populate your watchlist.



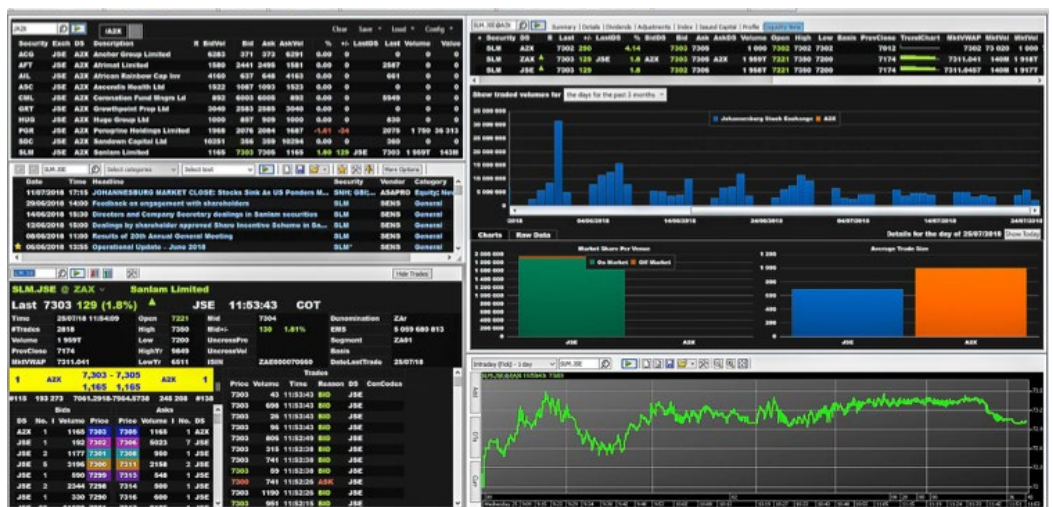
To access the data through the predefined system watchlist, follow the process detailed below:

- » On the toolbar click the **command menu > select Pricing > select Watchlist**
- » In the search bar type **/A2X > select the search icon.**
- » This will populate your watchlist.

Security	DS	R	Last	+/-	%	Bid	Ask
ACG	A2X		373	0	0.00	373	384
AFT	A2X		2314	0	0.00	2626	2648
AIL	A2X		582	0	0.00	586	589
ASC	A2X		1099	0	0.00	1072	1119
CML	A2X		5598	0	0.00	5822	5831
GRT	A2X		2515	0	0.00	2473	2474
HUG	A2X		830	0	0.00	915	948
PGR	A2X		2145	0	0.00	2104	2131
SDC	A2X		381	0	0.00	391	393
SLM	A2X		7748	106	1.39	7793	7800

IRESS Pro has pre-built commands to

enable users to find best execution venues, as well as analyse trade data in each venue.



IRESS Pro has additional functionality:

Trading

IRESS Pro also offers trading functionality meaning a user is able to route and manage orders from their market data terminal.

Best Execution

Best Market Routers can be implemented to guaranteeing compliance with MiFID II by ensuring best order execution.

