



A2X price data on Bloomberg

Bloomberg provides real-time data coverage of securities listed on A2X. Full visibility of price and volume activity will empower you to achieve best execution when transacting in listed securities across A2X and the JSE.

How do you find A2X price data on Bloomberg?

The data can be located using the A2X exchange code “AJ”. Users can access the data by typing in the security code followed by the exchange identifier and asset class.

For instance, the price of Afrimat shares can be accessed using **AFT AJ Equity <GO>**.

The list of shares currently available for trade can be found on our website www.a2x.co.za

You need to subscribe to Bloomberg to get real time data (as opposed to 15 minutes delayed). There is NO COST to access this real time data from A2X.

SUBSCRIPTION PROCESS EXC<GO>

To subscribe, follow the below process:

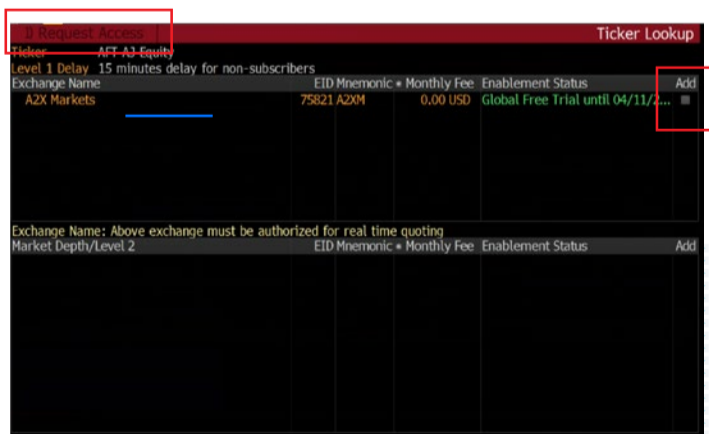
- » Type the identifier in the command line “**AFT AJ Equity<GO>**”
- » Run **DES<GO>** for the description of the stock to ensure that you are capturing the correct security
- » Ensure you use the A2X exchange code “AJ” (not SJ)



SUBSCRIPTION PROCESS - CONTINUED EXC<GO>

- » On the same panel type in **EXC<GO>** and the user will be taken to this subscription screen
- » Tick this box to subscribe for real time data at NO cost
- » and then hit the button on the top left-hand corner “**1) Request Access**”

Please note, you will need to logout and re-login for the enablement's to take effect



Contact the Bloomberg helpdesk by hitting **Help Help (F1 F1)** on your Bloomberg keyboard for assistance.