

A2X price data through Thomson Reuters

Thomson Reuters provides real-time data coverage of securities listed on A2X

Full visibility of price activity will empower you to achieve best execution when transacting in listed securities across A2X and the JSE.

How do you find A2X price data through Thomson Reuters?

First, subscribe to Thomson Reuters Eikon to access A2X real-time information. Apart from the Eikon subscription, there are NO additional fees to access this real-time data from A2X through Thomson Reuters.

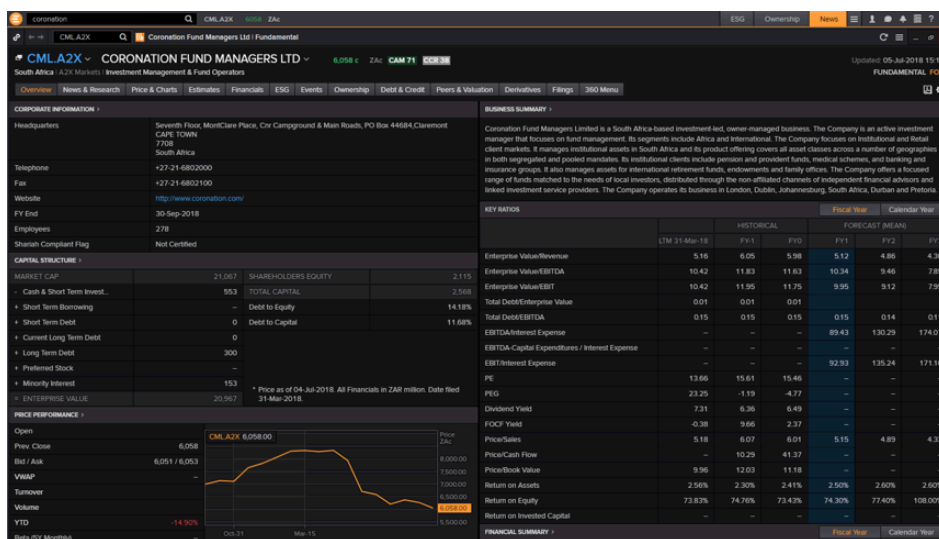
How do you find A2X price data on Thomson Reuters Eikon?

The data can be located using the A2X exchange code "A2X". Users can access the data by typing in the Security Code and the Exchange Code "A2X" in the search box, for example "CML A2X".

The list of shares currently available for trade can be found on our website www.a2x.co.za

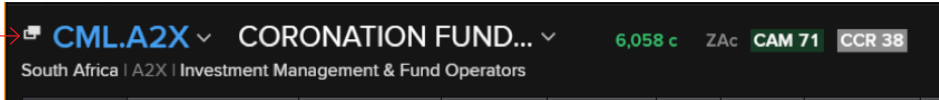
To access the data, follow the below process:

1. Type the identifier in the Search Bar, for instance "CML A2X"
2. Coronation Fund Managers listed on A2X will come up in the autosuggest bar
3. Ensure to select "CML.A2X" to view Coronation Fund Managers' listing on A2X in the new window that will open once selected (and not CMLJ.J)



Accessing the Real-time Level 1 data on Chain RIC [0#ALLSHARES.A2X]

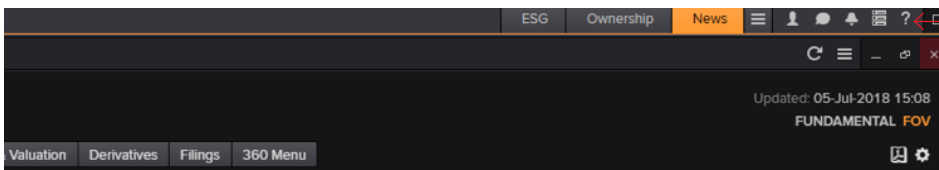
Thomson Reuters provides real-time price coverage of all securities listed on A2X under the Chain RIC (Reuters Instrument Code) [0#ALLSHARES.A2X] on Thomson Reuters Eikon.



Clicking this Pop-Out Window on the left-hand side of the Company Overview Page, will take you to the below Level 1 real-time RIC.

Flag	Trade	Time	Volume	Trade Id
:				
		Net.Ch	% chg	
		Open	Ac.Vol	
		High	Turnover	
		Low	Offcl Cls	
		Moves	Date	
		VWAP		
Num Bid	BidSize	Bid / Ask	AskSize	Num Ask
1	1086	6051 / 6075	1000	1
Reference Data				
ISIN	ZAE000047353	Dividend	Div Yield	
News		Div.Dat	EPS	
		Ex Div Date	P/E	
Close Information				
His.Cls	6058	Closing Bid	Closing Ask	
Hst.Cls.Dat	21JUN18			

Contact the Thomson Reuters Help Desk for further assistance, by clicking on the Question Mark on the right of your Eikon Toolbar:



A2X Data is also available from Thomson Reuters through a feed.